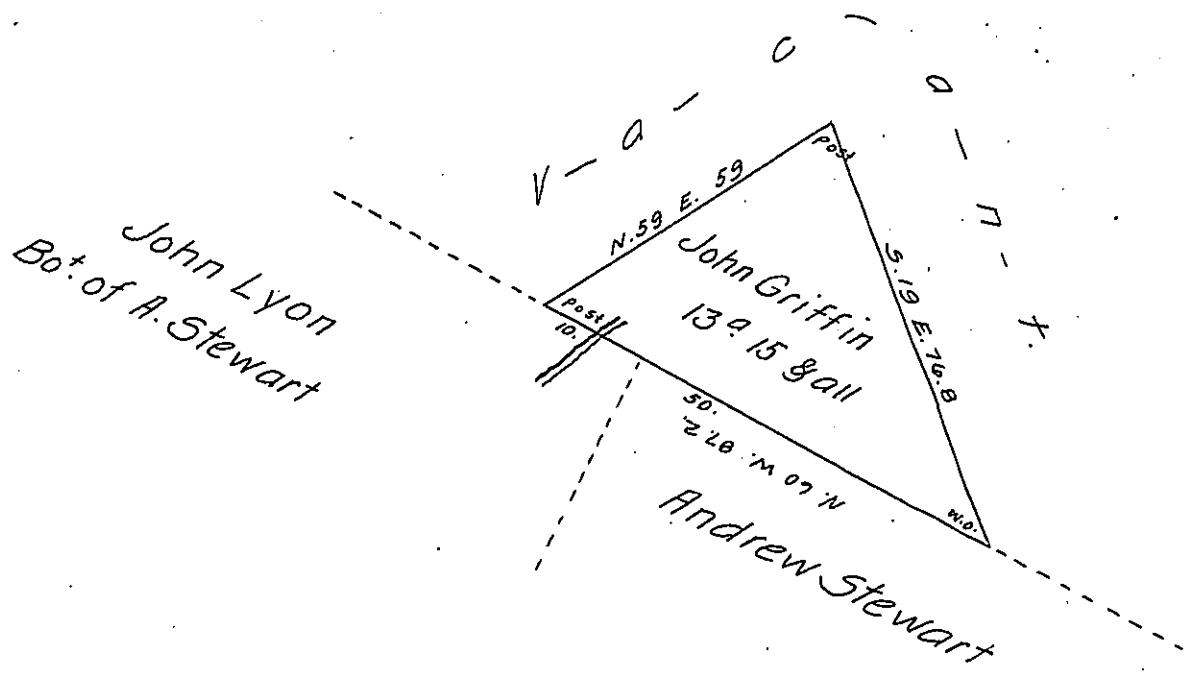


Scale 40 to the Inch



Situate on a branch of the big Meadow run in Wharton township Fayette County and Surveyed the 24th day of June 1823. In pursuance of a Warrant granted to John Griffin dated the 12th day of May 1823. for Vacant land in said township.

To Samuel Cochran Esquire } P^r. Alexander Mclean Deputy -
Surveyor General

IN TESTIMONY that the above is a copy of the original remaining on file in the Department of Internal Affairs of Pennsylvania, made conformably to an Act of Assembly approved the 16th day of February, 1833, I have hereunto set my Hand and caused the Seal of said Department to be affixed at Harrisburg, this fourteenth day of November 1907.

Henry Houck
Secretary of Internal Affairs.